

UMAT™ 2011

Undergraduate Medicine and Health Sciences Admission Test

Information Booklet

Registration deadline

5.00 pm AEST Friday 3 June 2011

Test date

Wednesday 27 July 2011

<http://umat.acer.edu.au>

Candidates should read this entire Information Booklet carefully, and watch the UMAT website for regular information updates.

Sequence of Events in the **Application Process**

Early April – 3 June
Submit online registration to
UMAT Office at ACER.

27 July
Take UMAT

By Published Deadline
Submit application for university admission to
relevant tertiary admissions centre (and/or
directly to the university, as appropriate).

Late September
Receive online UMAT Statement of Results
from ACER.

The UMAT Office cannot provide information
about university interview dates. Information
relating to interview dates should be obtained
by contacting the universities directly.

UMAT Office at ACER

Email: umat@acer.edu.au

Please include this in your address book, otherwise you may not receive important emails from the UMAT Office such as your confirmation of registration, Admission Ticket or your results. All communications from the UMAT office will be via email.

Web: <http://umat.acer.edu.au>

Phone: (03) 8508 7643

International: (+61 3) 8508 7643

Fax: (03) 9277 5757

International: (+61 3) 9277 5757

Post: Private Bag 55
Camberwell VIC 3124
AUSTRALIA

ACER has made every effort to ensure the accuracy of the information provided in this Booklet. However, ACER and the UMAT Consortium reserve the right to alter or amend test details and/or selection procedures and/or course availability outlined in the Booklet if this becomes necessary.

Contents

Introduction		2
	1.1 Background	
	1.2 Role of ACER	
	1.3 Equity and Fairness	
	1.4 Use of Personal Information	
	1.5 Communicating with the UMAT Office	
What is UMAT?		3
	2.1 The Undergraduate Medicine and Health Sciences Admission Test (UMAT)	
	2.2 Who can sit UMAT?	
	2.3 Participating universities	
	2.4 Structure and Content	
	2.5 Timing of the test	
Registering for UMAT		5
	3.1 Test date and registration deadline	
	3.2 Test centres	
	3.3 Registration fees	
	3.4 Refund Policy	
	3.5 How to register	
	3.6 Applying for Special Testing Conditions	
	3.7 Alternative Test Date	
Test Centre procedures and regulations		9
	4.1 Admission Ticket	
	4.2 Reporting to the test centre	
	4.3 Identification on the test day	
	4.4 Penalties for unethical behaviour	
	4.5 Breaches of copyright	
Preparing for UMAT		11
	5.1 UMAT Practice Materials	
	5.2 Test-taking strategy on the day of the test	
	5.3 Example questions	
UMAT Results		14
	6.1 Release of results	
	6.2 UMAT Scores	
	6.3 Validity of results	
	6.4 Using previous UMAT results	
	6.5 Appeals/Requests for re-mark	
University Selection Criteria		15
South Australia	The University of Adelaide Flinders University	
Northern Territory	Charles Darwin University	
New South Wales	University of Western Sydney The University of New South Wales The University of Newcastle/University of New England	
Queensland	The University of Queensland Bond University	
Victoria	Monash University La Trobe University	
Western Australia	The University of Western Australia	
Tasmania	University of Tasmania	
New Zealand	The University of Auckland (New Zealand) University of Otago (New Zealand)	
UMAT Checklist and Timeline		Inside back cover

Introduction

1.1 Background

The selection of students for health professional degree courses from a large pool of well-qualified applicants is a complex process because, invariably, there are far more academically qualified applicants than there are places available in such courses.

In the past, selection into health professional degree programs was based almost entirely on academic criteria, with applicants required to have a very high school leaving score based on studies in science and mathematics. Because of the strong demand for places in most health professional courses, the academic threshold increased year by year, leading to the situation where a prospective medical student, for example, had to achieve a score within the top 1% of Year 12 students to obtain a place.

For a number of reasons a selection policy based purely on academic marks is no longer appropriate. Firstly, there is no simple correlation between the level of prior academic achievement and success in health professional courses or later practice. Secondly, selection based solely on academic criteria might unreasonably discriminate against particular groups. Finally, and perhaps most importantly, the community has strongly indicated a desire for graduating health practitioners who have a demonstrated ability to communicate with and relate to their patients, in addition to having the necessary highly developed skills within their field.

For these reasons most Australian universities have adopted a multi-dimensional selection strategy in which both academic and non-academic qualities are taken into consideration when selecting students for tertiary training in the health professions. UMAT forms part of this process at some universities and aims to assess qualities not always reflected in an applicant's academic record.

1.2 Role of ACER

UMAT is developed by the Australian Council for Educational Research (an independent national research and development organisation) on behalf of a group of universities (the UMAT Consortium) formed for the purpose of collaborating on selection testing of applicants for Bachelor degrees in medicine and health sciences. ACER is responsible for the administration of UMAT on behalf of the UMAT Consortium.

1.3 Equity and Fairness

UMAT is developed to rigorous professional and technical standards. Test questions are designed and developed by teams of ACER test writers expert in their fields. All test questions must pass detailed panelling, trial testing, analysis and final review. The content, style and duration of the test are determined to ensure the testing program is relevant, fair, valid and reliable.

UMAT test data are subjected to statistical analysis to check that each test question has performed as required. Test questions in development are carefully scrutinised in an ongoing attempt to

minimise gender, ethnic or religious bias, and to ensure the test is culturally fair.

The test may contain a small number of trial questions that will not contribute to candidate scores.

1.4 Use of Personal Information

ACER will not disclose personal information collected for the purposes of UMAT to any third party other than the participating universities. UMAT candidates sign a statement acknowledging that their test results may be used by relevant authorities for research into the UMAT program. Candidates are assured that any use of their registration and test records will be treated with the utmost confidentiality. Candidate names will be separated from data in any research undertaken.

ACER's policy on the collection, access to and use of personal information can be found at www.acer.edu.au.

The UMAT Office protects candidate privacy through its policy of only discussing registration, results and other test related issues with candidates themselves and not with third parties unless specifically authorised by a candidate.

1.5 Communicating with the UMAT Office

If you have any queries about the registration process, or any other aspect of the UMAT program, you may contact the UMAT Office by email. Always include your full name and UMAT ID number. The Office will not answer questions relating to the content of the test.

Email the UMAT Office immediately if any of your personal details, such as your address, change during the year.

Please note that sometimes personal emails do not make it through our spam filters, so if we have not responded within a week, please resend the message.

Save the UMAT email umat@acer.edu.au in your list of contacts. This will prevent UMAT emails being regarded as spam and deleted/blocked from your account.

Check your email and the UMAT website regularly.

All communications from the UMAT Office will be via email.

What is UMAT?

2.1 The Undergraduate Medicine and Health Sciences Admission Test (UMAT)

The Undergraduate Medicine and Health Sciences Admission Test (UMAT) is developed each year by ACER on behalf of the UMAT Consortium. The test is developed and used specifically to assist with the selection of students into medicine and health science degree programs at undergraduate level at the universities listed on this page.

UMAT is not applicable for admission to graduate-entry programs. Prospective applicants to these programs must take the Graduate Australian Medical School Admissions Test (GAMSAT).

For information, see the GAMSAT website:
www.gamsat.acer.edu.au

UMAT is designed to assess general attributes and abilities gained through prior experience and learning; specifically, the acquisition of skills in critical thinking and problem solving, understanding people and abstract non-verbal reasoning. These abilities are considered important to the study and later practice of professions in the health sciences.

UMAT is an aptitude test. It is not curriculum-based and presupposes no particular subjects of study at secondary level. It does not require any knowledge or skills in mathematics or sciences, or in any other area of the curriculum. It is designed to complement your academic results, not to replicate them. It is not a personality or IQ test.

2.2 Who can sit UMAT?

UMAT is available to any candidate whose educational level at the time of sitting the test is final year of secondary schooling or higher. Candidates registering for UMAT2011 should have already completed or plan to complete their final year of secondary schooling (Year 12 in Australia; Year 13 in New Zealand) in 2011.

Students whose current educational level is Year 11 or lower are NOT eligible to take UMAT. This includes Year 11 students undertaking one or more Year 12 subjects.

If you are a medical student or a qualified health professional (e.g. a medical practitioner, dentist or physiotherapist) and you are required to sit UMAT, you need to seek permission before you can register for the test. Failure to obtain approval in writing from the UMAT Office will result in your registration being cancelled.

Please note that at select institutions international students may be exempt from taking UMAT or may be required to sit a different test. For details please refer to the websites of the universities to which you intend to apply.

2.3 Participating universities

You will need a UMAT score to apply for 2012 undergraduate admission to any of the following courses:

South Australia

The University of Adelaide

Medicine, Dental Surgery

Flinders University

Clinical Sciences/BMBS, Vision Sciences

Northern Territory

Charles Darwin University

Clinical Sciences

New South Wales

The University of New South Wales

Medicine, Optometry

The University of Newcastle/ University of New England

Joint Medical Program

University of Western Sydney

Medicine

Queensland

The University of Queensland

Medicine (provisional entry), Dental Science

Bond University

Medicine

Victoria

Monash University

Medicine, Pharmacy, Pharmacy/Commerce,
Physiotherapy

La Trobe University

Health Sciences (Dentistry), Oral Health Science

Tasmania

University of Tasmania

Medicine

Western Australia

The University of Western Australia

Medicine, Dental Medicine

New Zealand

The University of Auckland

Medicine

University of Otago

Medicine, Medical Laboratory Science, Dental Surgery,
Physiotherapy

2.4 Structure and Content

UMAT is divided into three sections designed to measure ability in the following areas:

- > Section 1: Logical Reasoning and Problem Solving
- > Section 2: Understanding People
- > Section 3: Non-verbal Reasoning

UMAT questions do not test academic knowledge and do not require special understanding of any academic discipline.

All questions are in multiple choice format with 4 or 5 response alternatives, from which you are asked to choose the most appropriate. Each question has only one correct response.

Questions in Sections 1 and 2 are in written form (though some Section 1 questions may present information in visual or tabular format). Section 3 questions are based entirely on visual material.

SECTION 1 Logical Reasoning and Problem Solving

Materials in this section are drawn from a wide variety of general sources and are based on a brief text or piece of information presented graphically.

Questions assess your ability to comprehend, draw logical conclusions, reach solutions by identifying relevant facts, evaluate information, pinpoint additional or missing information, and generate and test plausible hypotheses.

SECTION 2 Understanding People

This section assesses the ability to understand and think about people. Questions are based on a scenario, dialogue or other text representing specific interpersonal situations. Most passages will have several questions.

Questions assess your ability to identify, understand, and, where necessary, infer the thoughts, feelings, behaviour and/or intentions of the people represented in the situations.

SECTION 3 Non-verbal Reasoning

Questions in this section may be of several kinds. All are based on patterns or sequences of shapes and are designed to assess your ability to reason in the abstract and solve problems in non-verbal contexts.

Example questions can be found on pages 12–13.

2.5 Timing of the test

UMAT consists of 2 hours and 45 minutes of test time.

All three sections are presented in one test book and there are no rest breaks between sections. The table below shows the structure of the test by section and time.

	Number of questions	Time in minutes
Section 1 Logical Reasoning and Problem Solving	44	65
Section 2 Understanding People	40	50
Section 3 Non-verbal Reasoning	38	50

How long will I be at the test centre?

You should allow between 3½ and 4½ hours from the time of reporting to the test centre for all testing procedures to be completed.

This time may be shorter in test centres with smaller candidate numbers. If you are to be collected after the test, make sure this information is passed on.

Do not forget to eat breakfast and, depending on the reporting time of your designated centre, you may wish to eat a small snack before you go into the test room. You will not be allowed to take any food or drink, other than bottled water, into the test room.

Registering for UMAT

3.1 Test date and registration deadline

UMAT will be held on

Wednesday 27 July 2011

This date is the only opportunity to sit UMAT in 2011.

Your completed registration must be received at the UMAT Office at ACER no later than 5.00 pm Australian Eastern Standard Time (AEST) on

Friday 3 June 2011

Late registrations will be accepted up to 5.00 pm AEST Friday 17 June 2011, on payment of a late fee of \$65 in addition to the registration fee. The online registration system will close at 5.00 pm AEST on Friday 17 June 2011. It is not possible to register for UMAT2011 after this date.

3.2 Test centres

UMAT will be offered in the following locations:

ACT

Canberra

New South Wales

Armidale, Dubbo, Newcastle, Sydney

Northern Territory

Alice Springs, Darwin

Queensland

Brisbane, Cairns, Gold Coast, Townsville

South Australia

Adelaide

Tasmania

Hobart, Launceston

Victoria

Bendigo, Geelong, Melbourne, Mildura, Sale, Shepparton

Western Australia

Perth

New Zealand

Auckland, Dunedin

Singapore

United Kingdom

London

United States of America

Washington DC

When registering online, select the test location most convenient to you. You may nominate one centre only.

Requests for additional test centre locations cannot be accommodated.

You will be advised of your test centre's address and reporting time on your Admission Ticket, issued to registered candidates approximately 2 weeks before the test date.

3.3 Registration fees

The UMAT registration fee is \$200 (GST inclusive).

If you are eligible for concession, the registration fee is \$100. Please see Section 3.5 Step 2 for more details on the concession registration fee.

Late registrations will incur payment of an additional fee of \$65. Holders of concession cards will not be exempted from payment of the late fee where applicable.

If you wish to sit UMAT outside Australia and New Zealand, an overseas testing levy of AU\$185 is payable in addition to the registration fee.

3.4 Refund Policy

You may if you wish cancel your registration and obtain a refund of your fee. Requests for cancellation must be made in writing (fax or email are acceptable) and must be received at the UMAT Office by 5.00 pm AEST Friday 17 June. The administrative charge for this is \$30. There is no possibility of a refund after this date.

There is no penalty, other than the loss of your fee, if you register for the test but do not sit.

If you do not complete your registration by the deadline, your registration will be cancelled and any fees paid will be forfeited.

Registering to take UMAT does not constitute an application for admission to any university. Refer to pages 15–25 for details of application procedures for each of the universities, and to the back cover of this booklet for university contact details. You are strongly advised to obtain a prospectus from any university to which you intend to apply.

3.5 How to register

Registration is available online only via the UMAT website <http://umat.acer.edu.au>. To register you will need a computer with internet access and an email address. This email address will be used for all communication from the UMAT Office, including information on how to access your Admission Ticket and results.

Note: Candidates who provide an email address that is hosted by Hotmail or Yahoo are advised that some procedures implemented by these providers may result in some email messages not being accepted, or being flagged as spam. You are advised to use a different email service provider for the purposes of UMAT registration, or to save umat@acer.edu.au in your address book ASAP to ensure emails from the UMAT Office are not regarded as junk email.

To register follow these 5 easy steps:

STEP 1 Enter your details on the online registration form

Follow the instructions on screen.

The name you register with MUST match the name on the identification document you will bring to the test. Please see page 10 for important information about the requirements of suitable forms of ID.

The UMAT registration form will ask you to provide information that is essential for the processing of your registration, and information that may be used for research purposes. Candidate confidentiality will be strictly maintained in any research undertaken (see Use of Personal Information). The information collected during UMAT registration relates only to your registration to take UMAT, and is not related to any subsequent application you may make for a university place.

STEP 2 Select the appropriate Registration Fee

Fee reduction is available to candidates who hold a valid Health Care Card (HCC) or Pensioner Concession Card (PCC) (both issued by Centrelink, pictured below), or who are listed as dependants on the current HCC or PCC of a parent or guardian.



To be eligible for the Concession Registration Fee:

- > Your card must be signed by the cardholder; AND
- > Your card must be valid at the time of registration; AND
- > Your name must appear on the card and it must match the name on the UMAT registration; AND
- > You must submit a copy of **both sides** of the card to the UMAT Office within 2 weeks of registration or by the registration deadline (whichever comes first). See Step 5 for further details.

Failure to provide proof of concession on time may result in your registration being cancelled.

Please note that holders of student cards, Medicare cards, private health insurance membership cards and New Zealand Community Service cards are NOT eligible for concession.

The Concession Fee is not available to candidates taking the test outside Australia.

Only holders of a valid HCC or PCC are eligible for the Concession Registration Fee; claims of financial hardship based on other criteria cannot be considered.

STEP 3 Select your payment method

All payments must be made in Australian dollars.

The preferred method of payment is by credit card. Payments online may be made by AMEX, Diners Club, Mastercard or VISA. ACER uses a security carrier for its online payment functions to act as its interface with the banking system. Credit card and accompanying personal details are not recorded or stored by ACER but are encrypted at point of capture and transmitted directly to the bank. Thus you can be assured this is a safe payment method.

If you do not have access to a credit card, and you live:

- > **in Australia**, you must pay by Australia Post money order, made payable to 'ACER-UMAT'.
- > **overseas**, you must pay by bank draft in Australian dollars, drawn on an Australian bank, and made payable to 'ACER-UMAT'.

Please ensure your name is written on the back of your payment. The payment must be received within 2 weeks of registration or by the registration deadline (whichever comes first) or your registration may be cancelled. See Step 5 for further details.

Personal cheques and cash will not be accepted.

STEP 4 Receive your Registration Voucher email and UMAT ID number

When you finish your online registration, a Registration Voucher and Checklist will be emailed to your nominated account. This will contain your UMAT ID number but most importantly it will advise you if your registration is complete or not. If your registration is incomplete, follow the instructions in the email. See Step 5 for further details.

You must keep a record of your UMAT ID number in a secure place as you will need it to access your UMAT Admission Ticket and results and to complete your university applications.

STEP 5 Complete your registration

If you pay by credit card, AND you are not claiming the Concession Fee, your registration is complete when you have submitted the online form and payment.

In all other cases, your registration is INCOMPLETE until payment and/or a photocopy of your concession card are received at the UMAT Office along with a copy of your Registration Voucher.

To complete your registration you must return your Registration Voucher with payment and/or a photocopy of your concession card within 2 weeks of registration or by the registration deadline (whichever comes first). Please address your correspondence to:

2011 Registration Vouchers
UMAT Office
ACER Private Bag 55
Camberwell VIC 3124
Australia

The UMAT Office will not be held responsible for postal delays or losses leading to late receipt of vouchers. It is your responsibility to ensure your registration reaches the UMAT Office on time. Do not entrust it to anyone else to post.

Registration Vouchers received after 5.00 pm AEST on Friday 3 June 2011 will incur a late fee. Registration Vouchers received after 5.00 pm AEST on Friday 17 June 2011 will not be processed and will be returned unopened.

Do not phone the UMAT Office to enquire whether your registration voucher has been received. When your payment and/or proof of concession have been received and processed by the UMAT Office you will be emailed an updated Registration Voucher to confirm that your registration is complete.

ACER and the UMAT Consortium reserve the right to refuse or cancel a registration in certain circumstances, including but without limitation where you are not considered to be a bona fide prospective applicant to a course for which UMAT is a prerequisite.

3.6 Applying for Special Testing Conditions

If you have a visual, hearing, physical or other impairment that might interfere with your ability to take the test in the standard manner, you should write a letter to this effect and submit it to the UMAT Office as soon as possible after registration. Please include your UMAT ID number in your correspondence.

All such requests must be received at ACER no later than 17 June 2011 and must be accompanied by an explanatory letter from a registered health practitioner. This letter must be no more than one year old.

The letters from you and your practitioner must give clear information on your condition as it affects your ability to sit UMAT. All reasonable efforts will be made to provide appropriate testing conditions for your needs.

UMAT is a multiple-choice test and does not require extended handwriting. Therefore, difficulties with writing will not normally be seen as grounds for granting of special testing conditions.

Applications for special testing conditions will be processed after the deadline of 17 June 2011 and candidates will be notified of the outcome soon after.

There is no possibility of UMAT Scores being adjusted. No other special consideration is available.

3.7 Alternative Test Date

Provision has been made for candidates who are prevented from attending the test on 27 July 2011, as a result of a genuine and unanticipated illness or misadventure, to sit the test on one alternative date. This provision exists for cases of demonstrable difficulty; it is not available for a candidate who, for example, fails to register on time or is suffering from a cold or other minor illness on the test day. In order to be considered for testing on the alternative date a candidate must:

- > where possible, notify ACER in writing (email or fax are acceptable) at least one week before the 27 July 2011 test date; and
- > provide clear and detailed medical justification from a registered health professional. A medical certificate stating 'unspecified illness' is NOT sufficient.

OR

- > in the case of significant unanticipated illness on 27 July 2011, provide written evidence to ACER no later than 3 working days after the test date, and provide a statutory declaration or other evidence acceptable to the UMAT Office outlining the circumstances preventing attendance on the main test date. A medical certificate stating 'unspecified illness' is NOT sufficient.

Include your UMAT ID number in your written request.

Each case will be reviewed on its merits.

The Alternative Test Date in 2011 will be scheduled within two weeks of the main test date. This will be the only alternative test date available in 2011 and is not negotiable.

The Alternative Test Date will only be available at major centres.

Candidates who are unable to sit the test on 27 July because they fail to bring their Admission Ticket, or correct photo-bearing identification, or who arrive after the doors have closed, are not eligible to sit on the Alternative Test Date.

Test Centre procedures and regulations

4.1 Admission Ticket

You will receive your online UMAT Admission Ticket approximately two weeks before the test date. This ticket is your permission to attend the test centre. You must take a printout of it with you on the test day. The Admission Ticket will tell you exactly where and at what time to report on the day of the test. It will also contain your personal details. Please check it carefully and contact the UMAT Office immediately if there are any errors. It is important that your name on the Admission Ticket matches the name on your identification document or you will not be allowed into the test centre.

Your Admission Ticket will be collected at the end of the test, so you are advised to save a copy for your own records.

If you have not received your Admission Ticket by Wednesday 20 July 2011, you should contact the UMAT Office via email.

You will not be allowed to sit UMAT if you do not have your Admission Ticket with you.

The addresses of test centres cannot be released until Admission Tickets are issued.

4.2 Reporting to the Test Centre

You will be assigned to a test centre in your chosen city/town. Where multiple sessions are held in one city, you will be automatically allocated to a session. Changes between sessions are NOT permitted.

You must report to the test centre at the time stated on your Admission Ticket. Make sure you allow sufficient time to find the test centre, allowing for traffic congestion at the larger test centres (i.e. most capital cities). The test itself will start as soon as pre-testing procedures (checking of Admission Tickets and identification) are completed.

If you report to the test centre after all candidates have been admitted to the test room you may not be allowed to enter. No latecomers will be admitted once the test has started.

When you report to the test centre, you must bring your:

- > UMAT Admission Ticket
- > photo-bearing identity document
- > grey-lead pencils (medium soft HB) and eraser (pens are not required)

All other equipment, such as pencil cases, rulers, coloured pencils, scissors, etc. are prohibited and their use will be considered an act of cheating.

You may bring a bottle of drinking water into the test centre with you.

Prohibited Items

The following items will not be permitted in the test room:

- > Mobile phones
- > Calculators
- > Stopwatches/watches with stopwatch capabilities
- > Dictionaries
- > Audio or recording devices of any kind
- > Food (unless permission is granted by the UMAT Office based on medical reasons)
- > Bags
- > Stationery items other than pencils or erasers

There will be limited facilities for the storage of personal belongings at the test centres. You are advised to bring only essential items with you as neither the test centre nor the UMAT Office can be held responsible for the security of your belongings.

4.3 Identification on the test day

On the day of the test you will be required to show one form of photo-bearing identification.

The photograph must be a recognisable likeness of you as you are at the time of sitting the test. A childhood photograph in a passport is NOT acceptable, nor is a family or group photograph.

Your identification document MUST contain all of the following on the ONE document (you cannot use 2 documents to make up for missing information):

1. your name;
2. your date of birth;
3. a recent photograph (embedded in the card, i.e. not laminated); and
4. your signature.

Only the documents listed below are acceptable:

- > Current passport (issued within 2 years)
- > Current driver's licence or learner's permit (photo-bearing)
- > Current (photo-bearing) Keypass, Proof of Age Card or 18+ Card

Documents that have expired, photocopies of documents and/or student cards will NOT be accepted under any circumstances.

If you do not possess any of the above forms of photo-bearing identification you must obtain a **certified letter of identification**. This letter must be on official letterhead (school, other educational institution or workplace) and contain:

1. your name;
2. date of birth;
3. a passport photo glued to the letter with institution stamp overlapping;
4. signature and title of the official verifying the identification; and
5. your signature.

See the UMAT website for a sample letter of identification.

IMPORTANT: If you do not present one of the forms of identification listed above, or if the identity document you present does not bear an easily recognisable photograph of you as you look on the test day, or the name on your identification does not match the name on your Admission Ticket, you will NOT be able to take UMAT and will be turned away from the test centre.

4.4 Penalties for unethical behaviour

UMAT is a high-stakes test; that is, the results of the test have the potential to make a major impact on the future career of the test taker. For this reason, ACER, in conjunction with the UMAT Consortium, has established security procedures that will be strictly enforced at all times. The giving of false or misleading information during the registration process, and any unethical behaviour during the test itself, are viewed as serious breaches of UMAT ethical behaviour and will attract penalties.

Any candidate found guilty of unethical behaviour will automatically have their UMAT scores cancelled and may be prohibited from registering to take UMAT on a future occasion.

Practices that constitute unethical behaviour include:

- > Attempting to take the test on behalf of another person or have another person take the test for you;
- > Attempting to copy or remove a test book or part thereof, an answer sheet, or any notes, from the testing room;
- > Failure to follow test supervisor's instructions at all times, including the instruction to work only on a particular section of the test;
- > Failure to stop work and put pencils down immediately when instructed;
- > Giving or receiving of assistance during the test;
- > Creating a disturbance;
- > Using unauthorised aids (including but not limited to: notes, note paper, dictionary, calculator, mobile phone, recording device, stationery items other than pencil and eraser, etc.);
- > Attempting to take UMAT in any year prior to final year of secondary schooling;
- > Using or passing on information about test questions to a third party for the purpose of your own or the third party's personal or commercial gain.

4.5 Breaches of Copyright

Candidates are advised that UMAT is copyright material that is owned by the UMAT Consortium. In addition to any penalty imposed for unethical behaviour arising from a candidate using or passing on information about test questions to third party for the purpose of the candidate's or a third party's personal or commercial gain, a candidate, or a person acting on a candidate's behalf, who infringes or misuses the UMAT Consortium's intellectual property rights in UMAT may be subject to legal action.

Preparing for UMAT

The purpose of UMAT is to assess your abilities in a range of general skills. UMAT measures skills acquired over a period of time, including the ability to reason, make logical deductions and form judgments. The test does not draw on any particular body of knowledge or curriculum.

Wide and critical reading may provide helpful preparation for Sections 1 and 2. Some familiarity with the question types typically presented in UMAT would be beneficial.

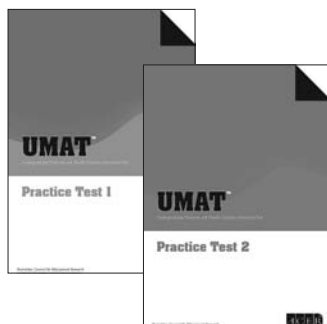
Neither ACER nor the UMAT Consortium conduct UMAT preparation courses. ACER and the UMAT Consortium universities do not recommend or endorse any commercially available courses offering UMAT preparation. Nor do ACER or the Consortium have knowledge of the content of such courses, or any involvement in their development, or any commercial interest in the programs. Thus the UMAT Office is unable to comment on their relevance or usefulness.

It is possible that some commercial preparation courses might provide misleading information or advice to candidates.

In particular, candidates should be wary of advice to spend many hours practising on 'UMAT-style' questions.

5.1 UMAT Practice Materials

ACER produces the only official UMAT preparation material. There are currently two booklets available in the form of e-books: UMAT Practice Test 1 and UMAT Practice Test 2.



Each UMAT Practice Test is equivalent to a full test and will take approximately 2 hours and 45 minutes to complete under exam conditions. Though similar in format, they contain different selections of materials and are designed to give examples of the types of question, skills and knowledge contained in UMAT. Answers are provided at the end of the e-book.

The materials are available from the UMAT website or with your registration. UMAT Practice Test 1 is included with the UMAT2011 registration. This e-book is an updated edition of the UMAT Practice Test first published in 2008. UMAT Practice Test 2 was first published in 2010.

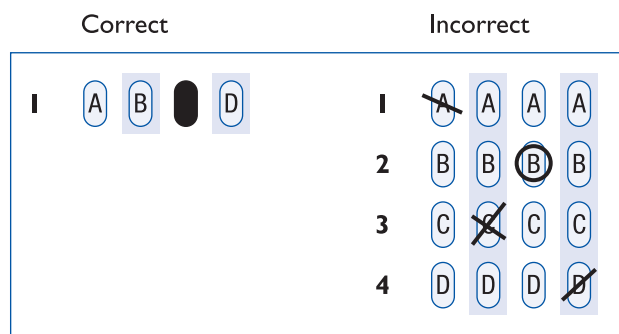
5.2 Test-taking strategy on the day of the test

Each test section is separately timed. You are advised to work steadily through each section. It is not advisable to spend too much time on any one question. Read through all the alternative answers to a question, even if you think the first one is correct, before marking your chosen response. If you think you know the answer to a question, mark it, even if you are not certain. Go on to the next question and come back later if you have time.

Please note the following:

- > All questions have the same value, therefore by attempting as many questions as possible you stand the best chance of maximising your score.
- > No marks are deducted for a wrong answer.
- > If you mark more than one answer to a question it will be considered wrong.
- > Answers should be marked directly onto the answer sheet, not in the test book.
- > You may do rough work in the margins of your test book. Scrap paper is not allowed.

UMAT is in multiple-choice format. You will mark your answers by filling in ovals on a machine-readable answer sheet. It is very important that you record your answers carefully. Record your answers by completely filling in the oval with pencil. If you decide to change an answer, erase it completely and mark the oval corresponding to your new choice. See example ovals below:



5.3 Example questions

Example questions from each of the three UMAT Sections are provided overleaf.

For further practice you may wish to refer to the questions in the UMAT Practice Test 1 and 2 e-books.

Example questions

Example Questions — Section 1

Botanists studied a rainforest in Nicaragua that had been ravaged by Hurricane Joan in 1988. They found that in the following ten years the number of tree species had increased by at least 200%, and up to 300%, in eight storm-affected plots. Other plots not affected by the hurricane showed little if any such increase.

1. From this information, it can be concluded that
 - A hurricanes play an important role in ensuring the long-term survival of tropical rainforests.
 - B when the dominant trees in an area of tropical rainforest are destroyed, other species are given a chance to flourish.
 - C the overall life of a tropical rainforest is increased if large areas are occasionally levelled to the ground.
 - D the productivity of a tropical rainforest will be maximised if large areas are occasionally levelled to the ground.

Delia goes bushwalking, and afterwards finds that she has painful insect bites over most of her body. She is told that both Esi-oil and Pine-elix are good for easing the pain of these bites. To test whether there is any difference, she applies Esi-oil to the bites on her left side, and Pine-elix to those on her right side. The next day, the bites on her left side feel considerably better, while those on her right side feel only a little better.

2. Which of the following is consistent with these results?
 - A Neither product relieves insect bite pain; Esi-oil actually delays recovery considerably, and Pine-elix delays recovery somewhat less.
 - B Neither product relieves insect bite pain; Pine-elix actually delays recovery considerably and Esi-oil delays recovery somewhat less.
 - C Both products relieve insect bite pain, Pine-elix more so than Esi-oil.
 - D Pine-elix and Esi-oil are equally effective products for relieving insect bite pain.
3. Which one of the following modifications would have enabled Delia to learn most about the effectiveness of the two products in relieving insect bite pain?
 - A Repeat the original applications.
 - B Apply the different products randomly to different parts of her body.
 - C After the original applications, apply the same products to the opposite sides of the body.
 - D As well as treating some bites with Esi-oil and some with Pine-elix, leave some of the bites untreated.

Example Questions — Section 2

Bob's wife, Mary, has been in hospital recovering from a heart attack. The doctor informs Bob that she is now well enough to return home, although she will need to 'take things easy for a while'.

Bob: I'm glad she can come home now Doctor, but I'm not sure I can look after Mary by myself. We live on our own, you know.

Doctor: Bob, it's natural to feel a little anxious, but the best thing for Mary will be to be back in her own environment.

1. In his response, the doctor has
 - A not realised that Bob is concerned.
 - B not really dealt with Bob's concerns.
 - C responded to Bob's concerns effectively.
 - D made Bob feel bad about being concerned.
2. Following the doctor's reply, Bob is likely to feel
 - A relieved.
 - B empowered.
 - C embarrassed.
 - D apprehensive.

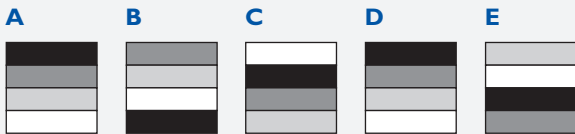
In the following passage, an adolescent boy talks about living with a physical disability.

As I have been physically disabled all my life, I have managed to cope with the purely practical problems arising with a minimum of fuss. I felt no loss, because I had no feelings of 'normality' to compare with. One of my physical problems is that I am short, about 127 centimetres tall. I was constantly mistaken by strangers for a little kid. It's a real pain for a 16-year-old boy to be handed a kid's menu every time he enters a restaurant. It is even worse when mere coherent speech is greeted with awe.

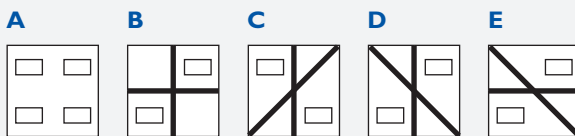
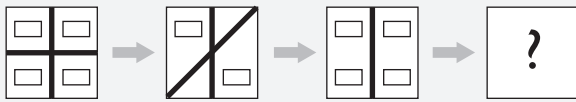
3. For the writer, the main problem with his disability is
 - A the embarrassment of being so short.
 - B never knowing what it is to be 'normal'.
 - C dealing with other people's preconceptions.
 - D coping with the practical problems caused by his condition.

Example Questions — Section 3

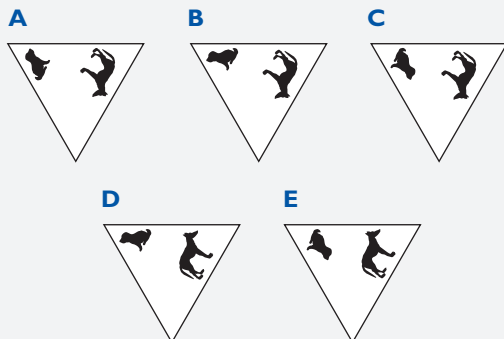
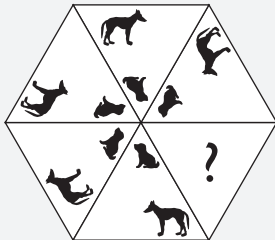
1. Arrange the five pictures so that they form a logical sequence. Then select the middle picture of the sequence and mark the corresponding letter (A, B, C, D or E) on the answer sheet.



2. Select the picture that would logically be the next in the sequence and mark the corresponding letter (A, B, C, D or E) on the answer sheet.



3. Select the picture that would logically complete the picture and mark the corresponding letter (A, B, C, D or E) on the answer sheet.



Answers

Section 1: Q1: B
Q2: B
Q3: D

Section 2: Q1: B
Q2: D
Q3: C

Section 3: Q1: E
Q2: D
Q3: B

UMAT Results

6.1 Release of results

An online UMAT Statement of Results will be issued to every candidate in late September.

Under no circumstances will results be released over the telephone, by fax or by email. This is to protect candidate confidentiality. Results for all candidates will be provided to the universities for the purpose of selecting applicants for interview.

6.2 UMAT Scores

You will receive a score for each section of the test, and an overall score.

You also will be provided with information on your overall percentile rank.

Candidates will not be provided with any additional information on the scoring process. All such information remains the property of ACER and the UMAT Consortium. A candidate has no right to examination of ACER's scoring processes and methodologies.

The universities will set their own UMAT cut-off scores each year. These will be the minimum UMAT scores acceptable for consideration by the admissions committees and may vary from one university to another. The universities may also choose to use the scores in other ways.

6.3 Validity of results

UMAT scores are valid for two years.

This means they can be used in an application for admission to any of the UMAT Consortium universities in the year following the test, and/or one year later. For example, results from UMAT2011 will be valid for application to enter an undergraduate medicine or health science course beginning in 2012 and/or 2013 (but not in 2014).

If you have more than one valid UMAT score (i.e. you take UMAT two years in a row) you may use whichever set of scores you prefer, but it is not possible to combine scores from different UMAT administration years. The University Admissions Committees will not have access to your UMAT scores from other years.

There is no restriction on the number of times you may take UMAT.

6.4 Using previous UMAT results

If you are not intending to sit UMAT2011 and wish to use your UMAT2010 results to apply for university admission in 2012, you should provide your UMAT2010 candidate number during the university application process, either with your application to the tertiary admission centre or by sending it directly to the university. Contact the university concerned for further information.

You should be aware that university cut-offs may change from year to year, and UMAT scores that gained you an interview in one year may not be sufficient to gain an interview in the following year.

6.5 Appeals/Requests for re-mark

The UMAT Office will not enter into appeals against UMAT results. Nor is it possible to give any special consideration for impaired performance on the day of the test caused by illness or other unexpected personal situations.

There is no possibility of special consideration being applied to test results by ACER or by University Admissions Committees. Under no circumstances will scores be adjusted to account for any perceived disadvantage.

If you have a complaint relating to the test centre or the conduct of the test, this should be reported to the supervisor on the day, or in writing to the UMAT Office within seven days of the test administration.

Candidates are advised that UMAT results are released only after careful calculation and extensive checking. Errors in scoring are highly unlikely.

However, following receipt of the UMAT Statement of Results a candidate may apply for a re-mark of his or her answer sheet if they believe an error may have been made.

A re-mark involves individual re-scoring of the answer sheet. The resulting scores will then be compared with the computer-generated scores to check that there has been no error in calculating or collating marks.

Requests for re-mark must be made in writing to the UMAT Office at ACER via email and must be received no later than Friday 21 October 2011. A fee of \$85 (GST inclusive) is payable for this service (only Australia Post money order, International Bank drafts or credit card payments are acceptable). In the unlikely case of a scoring error being found, the re-mark fee would be refunded.

- > All re-marks will be processed after the deadline of 21 October 2011.
- > Re-mark results cannot be released to candidates in time for selecting university preferences.

University Selection Criteria

The following information on application for 2012 admission is provided for initial guidance only.

More comprehensive information relating to selection procedures for the courses offered by each of the UMAT Consortium universities should be obtained by contacting the universities directly (see contact details on back cover of this booklet).

You are strongly advised to obtain a prospectus from each university in which you have an interest, and to consult the university websites.

UMAT will be used (by participating universities in Australia) in the selection process for applicants who are Australian citizens/permanent residents or New Zealand citizens. It may also be required for other categories of applicants.

You **MUST** keep a record of your UMAT ID number as this must be quoted on all applications for university admission.

In addition to the standard quota places, each of the participating universities in Australia offers a small number of places in medicine made available by the Commonwealth through the Medical Rural Bonded Scholarship Scheme.

Details may be obtained by contacting the Department of Health and Ageing:

Freecall: 1800 248 720

Email: MRBScholarships@health.gov.au

The University of Adelaide

Bachelor of Medicine and Bachelor of Surgery Bachelor of Dental Surgery

Full details of selection criteria, application deadlines and other requirements for all applicants are set out in the '2012 Faculty of Health Sciences Undergraduate Admissions Guide'. This will be available online from mid-April 2011 at the following address: www.health.adelaide.edu.au/.

Applicants are expected to obtain a copy of this booklet from the university. Failure to read this booklet will not be grounds for special consideration. This booklet expands on the summary information provided here and clearly sets out details of information sessions, other steps in the application process, and timelines.

Entry to the Bachelor of Medicine, Bachelor of Surgery program is mostly reserved for school leavers (i.e. applicants with no academic record at a tertiary education institution). However a limited number of places are available for applicants currently studying at the University of Adelaide and wishing to apply as a tertiary transfer applicant. Up to 25 places will be set aside for applicants under the Rural Background Entry Cohort.

There will be approximately 150 places for domestic first year students in the Bachelor of Medicine, Bachelor of Surgery program in 2011. Commonwealth Supported Places (both bonded and not bonded) will be available as will places under the Commonwealth Medical Rural Bonded Scholarship Scheme and the SA Government Bonded Scholarship Scheme.

Entry to the Bachelor of Dental Surgery program is open both to school leavers and applicants with a tertiary academic record.

Selection into both programs will be based on the following criteria:

- > Performance in UMAT;
- > Performance in a Structured Oral Assessment (for the top UMAT performers); and
- > Academic Performance (Year 12 or tertiary performance record, as appropriate).

There are two special entry categories: one for Aboriginal and Torres Strait Islander applicants, and a second for applicants without a traditional school background.

International students wishing to apply for the Bachelor of Medicine, Bachelor of Surgery or Bachelor of Dental Surgery programs are not required to take UMAT and should contact the Student Centre at the University of Adelaide for further information.

Flinders University

Bachelor of Clinical Sciences, Bachelor of Medicine and Bachelor of Surgery

A total of 25 Commonwealth-Supported places will be available to school leavers in 2012. Entry is available to school leavers only, i.e. applicants with no academic record at a tertiary education institution. This group will include up to 5 places for Indigenous students.

Successful applicants initially undertake two years of study in the Bachelor of Clinical Sciences program, with either a Health Sciences or Medical Science focus. Those who pass all topics in the first two years of this program and maintain an overall Credit-average (Grade Point Average (GPA) of 5.0) may then continue into the 4 year Flinders medical program (BMBS) in a Commonwealth-supported place. After a total of 6 years, successful students will be awarded the double degrees Bachelor of Clinical Sciences/BMBS.

Selection will be based on

- > Performance in UMAT;
- > Academic Performance in Year 12 (ATAR (Formerly TER) or equivalent).

In ranking applicants, performance in Year 12 (ATAR or equivalent) will contribute 90% to a selection score; and a UMAT-derived score will contribute 10%.

Prerequisites: None. Although it is recommended that intending applicants undertake Chemistry, Physics or Biology at Year 12 level.

Applications for entry should be submitted to the SA Tertiary Admissions Centre (SATAC) by Friday 2nd December 2011. Applicants will be asked to enter their UMAT identification number when they lodge their application on SATAC's UniWeb.

In calculation of the ATAR, the University assigns bonus points to students from regional or remote high schools or schools considered to be disadvantaged (local SA metropolitan only).

The double degree pathway for Year 12 students is not available to international applicants.

Further information on the Bachelor of Clinical Sciences/BMBS is available at www.flinders.edu.au/courses/undergrad/bclsbmbs/. For information on the Flinders 4 year (graduate-entry) medical program, see www.flinders.edu.au/gemp/new.

Bachelor of Medical Science (Vision Science), Master of Optometry

A total of up to 30 Commonwealth Supported Places will be available to school leavers and higher education transfers in 2012. Up to fifteen places will be for applicants from rural and remote areas who wish to practise in rural and remote regions across Australia. In addition, up to 5 places will be for Indigenous students. Students are admitted to the Bachelor of Medical Science (Vision Science), Master of Optometry pathway. Those who complete the Bachelor of Medical Science (Vision Science) with a Credit-average (Grade Point Average (GPA) of 5.0), are guaranteed a place in the two-year Master of Optometry.

Selection to the Bachelor of Medical Science (Vision Science), Master of Optometry will be based on:

- > Performance in UMAT;
- > Academic Performance in Year 12 (ATAR (Formerly TER) or equivalent) or Grade Point Average (GPA).

In ranking applicants, performance in Year 12 (ATAR or equivalent) or Grade Point Average (GPA) will contribute 90% to a selection score; and a UMAT-derived score will contribute 10%.

Prerequisites: None. However, knowledge of Stage 2 Chemistry and Physics is assumed.

Applications for entry should be submitted to the SA Tertiary Admissions Centre (SATAC) by Friday 2nd December 2011. Applicants will be asked to enter their UMAT identification number when they lodge their application on SATAC's UniWeb.

In calculation of the ATAR, the University assigns bonus points to students from regional or remote high schools or schools considered to be disadvantaged (local SA metropolitan only).

Further information on the degree and admission requirements is available at www.flinders.edu.au/courses/undergrad/bmsmopt/.

Charles Darwin University

Bachelor of Clinical Sciences (articulating with Flinders University's Northern Territory Bachelor of Medicine and Bachelor of Surgery)

In partnership with Flinders University, Charles Darwin University will offer a total of 12 Commonwealth-Supported places in 2012 in a pre-medicine pathway leading to a place in Flinders University's Bachelor of Medicine and Bachelor of Surgery in 2013. This group will include up to 2 places for Indigenous students.

Entry is available to applicants who are eligible to compete in the Year 12 sub quota at CDU. Currently, applicants who hold a Year 12 qualification and have studied at higher education for one year or less are eligible to compete in the Year 12 sub quota, however this is under review for 2012 entry. Please contact CDU prior to sitting UMAT to determine if you are eligible for entry.

Successful applicants are initially admitted to a Bachelor of Clinical Sciences program. Those who pass all units in the first two years of this program and maintain an overall Credit-average (Grade Point Average (GPA) of 5.0) may then continue into the 4 year Flinders medical program (BMBS) in a Northern Territory Government supported place in 2013. After a total of 3 years successful students will be awarded the degree of Bachelor of Clinical Sciences by Charles Darwin University and after a total of 6 years they will be awarded a Bachelor of Medicine and a Bachelor of Surgery by Flinders University through its Northern Territory Medical Program.

Selection will be based on:

- > Performance in UMAT;
- > Academic Performance in Year 12 (ATAR (Formerly TER) or equivalent).

In ranking applicants, performance in Year 12 (ATAR or equivalent) will contribute 90% to a selection score; and a UMAT-derived score will contribute 10%.

Prerequisites: None. Although it is recommended that intending applicants undertake Chemistry, Physics or Biology at Year 12 level.

Applications for entry should be submitted to the SA Tertiary Admissions Centre (SATAC) by Friday 2nd December 2011. Applicants will be asked to enter their UMAT identification number when they lodge their application on SATAC's UniWeb.

In calculation of the ATAR, the University assigns bonus points to students from Northern Territory high schools.

The combined degree pathway for Year 12 students is not available to international applicants.

University of Western Sydney

Bachelor of Medicine and Bachelor of Surgery

Entry to Medicine is available for school leavers, school leavers with an incomplete degree, and graduates who have completed a three year or longer degree. Up to approximately 25% of the places will be for graduates and the remainder for school leavers/non-graduates.

One hundred (100) Commonwealth Supported Places will be available in 2012.

Selection will be based on:

- > Performance in UMAT;
- > Prior academic performance; and
- > Performance in a structured interview.

The thresholds of academic performance required for applications for entry to be considered are:

- > School leavers/non-graduates: NSW UAI or equivalent Tertiary Entrance Rank at least 95 (at least 93 for residents of Greater Western Sydney).
- > Graduates: Grade Point Average in most recent degree at least 5.5.

Alternative entrance procedures will be available for Indigenous applicants, who should contact the School of Medicine directly. (UMAT is not essential for Indigenous applicants.)

In addition to applying for and sitting UMAT, applicants must:

1. Lodge an 'Application for Selection into Bachelor of Medicine/ Bachelor of Surgery Program' directly with the School of Medicine, University of Western Sydney by 30 September 2011. Late applications cannot be accepted.

AND

2. Make an application with the NSW and ACT Universities Admissions Centre (UAC) by 30 September 2011. Late applications (incur a UAC late fee) may be considered up to the time of the UAC final close of applications if any places are still available.

Full details of the admissions process and requirements, and the application forms that must be lodged directly with the School, are available from the School of Medicine's website at: www.uws.edu.au/medicine/som.

The University of New South Wales

Bachelor of Medicine and Bachelor of Surgery Bachelor of Arts, Bachelor of Medicine and Bachelor of Surgery

There will be a total of 208 Commonwealth Supported Places available for entry in 2012, including 52 places under the Rural Students Entry Scheme (for applicants with a significant rural background). Eight places are being offered under the Medical Rural Bonded Scholarship Scheme and 52 places as Bonded Medical Places. There will be no domestic fee-paying places.

The majority of places are usually offered to school leavers, with some places offered to applicants who have partly completed or completed an undergraduate degree. There is also a special entry scheme for applicants in the BMedSc program at UNSW.

Special consideration is also given to Aboriginal and Torres Strait Islander applicants via a special entry scheme.

Selection into the course will be based on:

- > Performance in Year 12;
- > Performance in tertiary studies (if one year or more completed);
- > Performance in UMAT; and
- > Performance in a semi-structured interview.

Applicants are required to:

1. Complete the online application form on the Faculty's website by 30 September 2011;

AND

2. Apply via the Universities Admissions Centre (UAC) by 30 September 2011 or by 30 November 2011 (late fee applies).

International students who are residing in Australia or New Zealand in 2011 are also required to take UMAT.

For further information, see www.med.unsw.edu.au.

Bachelor of Optometry, Bachelor of Science

There will be approximately 70 places available for entry in 2012. It is anticipated that for direct entry there will be 45 Commonwealth Supported Places, 5–10 international fee-paying places and no domestic fee-paying places. In addition, it is anticipated that for alternative entry into Year 2 there will be 10–15 Commonwealth Supported Places and 5 international fee-paying places.

Direct entry selection into Optometry/Science is based on

- > Performance in UMAT;
- > Academic Performance (Year 12 and/or tertiary record as appropriate).

All Australian students applying for entry are required to take UMAT and apply through the Universities Admissions Centre (UAC).

International students who reside in a country where UMAT is offered are required to take the UMAT.

Students applying for alternative entry into Year 2 of Optometry/Science must:

- > have completed the required subjects' equivalent to those in the first year of Optometry/Science while enrolled in Science at the University of New South Wales;
- > have not undertaken post-secondary studies prior to enrolment in Science at the University of New South Wales.

Students applying for alternative entry to Year 2 need to take UMAT. Selection for alternative entry to Year 2 will be based on:

- > Performance in UMAT;
- > Performance in Year 12 (to be competitive this would need to be an ATAR or equivalent of at least 90.00); and
- > Performance in required first year subjects completed while enrolled in Science at the University of New South Wales.

Students should apply directly to the University of New South Wales for alternative entry to Optometry/Science.

For further information, see www.optom.unsw.edu.au.

University of Newcastle/ University of New England

Joint Medical Program (JMP)

Bachelor of Medicine

The Bachelor of Medicine - Joint Medical Program (JMP) is offered jointly by the University of Newcastle and the University of New England. In 2012 there will be a total of 170 Commonwealth Supported Places (CSP) available within the Bachelor of Medicine - Joint Medical Program across the two Universities. One hundred and ten (110) CSPs at the University of Newcastle and sixty (60) at the University of New England. Included are six (6) Medical Rural Bonded Scholarships and forty-three (43) Bonded Medical Places.

Under the Joint Medical Program's Rural/Remote Admissions Scheme (RRAS) at least 30% of CSPs available within the JMP will be allocated to applicants who can demonstrate a significant rural/remote background. Details will be available at

www.newcastle.edu.au/jmp/enrolments/rras.html

To be considered for admission to the JMP, applicants must satisfy a minimum academic requirement. Selection of academically qualified applicants for admission to the program is based on:

- > Performance in a structured (multi-mini) interview;
- > Performance in an online personal qualities assessment;
- > Performance in UMAT.

Applicants should obtain the information booklet Bachelor of Medicine - Joint Medical Program 2012 detailing the necessary application and selection procedures. This booklet will be available in March and may be obtained directly from the Faculty of Health, University of Newcastle or from the School of Rural Medicine, University of New England or online at www.newcastle.edu.au/jmp/enrolments/applicationprocess.html

In addition to a UMAT registration, applicants are also required to lodge the following two applications:

1. An online Joint Medical Program direct university application with the University of Newcastle by 30 September 2011. Late applications will not be accepted. Applications are available at www.newcastle.edu.au/jmp;

AND

2. An application with the Universities Admissions Centre (UAC) by 30 September 2011. Late UAC applications will be considered if received by the UAC late closing date of 30 November 2011; a late fee applies.

An applicant is ineligible for consideration unless both of the above applications have been lodged by the relevant closing dates and the applicant sits UMAT.

Alternative selection procedures apply for Aboriginal and Torres Strait Islander applicants. Students wishing to apply for entry to the JMP under this category are not required to sit UMAT and should contact either The Wollotuka Institute, University of Newcastle (02 4921 8705) or the Oorala Aboriginal Centre,

University of New England (02 6773 3034) concerning application and admission requirements.

The University of Newcastle/University of New England will not accept direct applications from international students for entry to the JMP in 2012.

The University of Queensland

Bachelor of Medicine/Bachelor of Surgery (MBBS) Provisional Entry for School Leavers scheme

For domestic school leavers who complete Year 12 in 2011, 150 Commonwealth Supported Places are available for the 2012 intake.

Selection for entry will be based on:

- > Performance in UMAT (minimum score of 50 in each section);
- > Attainment of Queensland OPI (or equivalent).

Students who receive an offer for the Provisional Entry scheme may choose to enrol in any of University of Queensland's undergraduate programs or one of the three six-year dual degree programs, the Bachelor of Arts/ MBBS, the Bachelor of Health Sciences/MBBS, or the Bachelor of Science/MBBS. All offers are provisional and require students to meet a grade point average of 4.00 prior to entering the MBBS program or MBBS component of the dual degree.

Applications must be lodged with the Queensland Tertiary Admissions Centre (QTAC) by 30 September 2011, by using only one of the MBBS QTAC codes: 721102 (Provisional Entry for School Leavers – NB: this code is generic for the full undergraduate program option), 707802 (BArts/MBBS), 729102 (BHealth Sciences/MBBS), or 731702 (BScience/MBBS).

International students studying Year 12 in Australia are not eligible to apply for the above MBBS (Provisional Entry for School Leavers) scheme; however, there are 50 places available for international students to apply to undertake one of the three six-year MBBS dual degrees by applying directly to The University of Queensland's UQ International Office, and also submitting a QTAC application using the MBBS QTAC codes for BArts/MBBS (707802), BHealth Sciences/MBBS (729102), or BScience/MBBS (731702). The selection for entry will be based on UMAT or ISAT performance and an OPI (or equivalent).

For further information refer to the School's website:

www.som.uq.edu.au

Bachelor of Dental Science

There will be up to 50 Commonwealth Supported Places and 15 international full-fee paying places available for Year 1 entry into the BDS program. Admission will be open to both school leavers and students who have completed one year or more of tertiary studies.

Selection for entry will be based on:

- > Academic performance (Year 12 or tertiary studies as appropriate);
- > Performance in UMAT (domestic applicants);
- > Performance in ISAT (international full-fee applicants).

An interview will not be part of the selection process.

Subject prerequisites (Year 12 equivalent) include:

- > English (4 SA);

- > Mathematics B (4 SA);
- > One subject from Biological Science, Chemistry or Physics (4 SA), (Chemistry recommended).

Applications must be lodged with the Queensland Tertiary Admissions Centre (QTAC) by 30 September 2011. International full-fee students will not be required to take UMAT.

International students studying Year 12 in Australia in 2011 should apply through the Queensland Tertiary Admissions Centre (QTAC) by 30 September 2011. All other international students should apply through the University of Queensland's International Admissions Section.

For further information refer to www.uq.edu.au/study.

Bond University

Bachelor of Medicine and Bachelor of Surgery

There will be approximately 84 full-fee paying places for the Medical Program in 2012. There are no Commonwealth Supported Places available and there are no places available for international students.

The majority of entrants will be school leavers or applicants who have completed only partial tertiary studies towards an undergraduate degree. However, a number of places will be available for graduates from approved Universities.

Selection for school leavers (or applicants who have only partially completed an undergraduate degree) will be based upon an equally weighted combination of:

- > Performance in UMAT;
- > Performance in Year 12 (ATAR or QLD Overall Position) and/or partial tertiary subjects;
- > Performance in a semi-structured interview.

Pre-requisites:

- > Minimum English (Year 12 or NZ bursary)
- > Minimum Chemistry (Year 12 or NZ bursary)
- > Minimum Mathematics B (Year 12 or NZ bursary)

Selection for graduate students will be based upon an equally weighted combination of GPA and performance in a semi-structured interview. Graduates will not be required to sit UMAT or GAMSAT.

All applicants for both Undergraduate and Graduate entry will be required to apply through the Queensland Tertiary Admissions Centre (QTAC) from January in 2012.

Domestic undergraduate students who are not resident in Australia or New Zealand in 2011 and who do not sit the UMAT will not be eligible.

Further information is available at:

www.bond.edu.au/study/courses/hsm/ug/mbbs01.html

La Trobe University

Bachelor of Health Sciences (Dentistry)/Master of Dentistry Bachelor of Oral Health Science

In 2012 there will be up to 50 Commonwealth Supported Places offered in the dentistry program and 30 in the oral health program. A number of these places will be awarded to non-Year 12 candidates.

Bachelor of Health Sciences (Dentistry)/Master of Dentistry

Selection of non-Year 12 candidates will be based on:

- > Performance in UMAT;
- > Previous Academic Record;
- > Personal information form;
- > Possible interview as deemed by the Department of Dentistry and Oral Health.

Therefore all non-Year 12 applicants who are not currently La Trobe University undergraduates **must** complete UMAT for consideration for entry into the Bachelor of Health Science (Dentistry)/Master of Dentistry.

For Year 12 applicants UMAT is not required.

The Department of Dentistry and Oral Health gives special consideration to indigenous applicants and applicants from rural areas, this detail should be addressed within the personal information form and supporting documentation provided.

Current undergraduate applicants within La Trobe University should apply for an internal course transfer. Information on how to apply can be found at <http://www.latrobe.edu.au/study/apply/undergraduate-study/transfer-between-courses>.

Applications must be submitted to the Victorian Tertiary Admissions Centre by the published deadline.

Bachelor of Oral Health Science

Selection of non-Year 12 candidates will be based on academic record, and may include GPA and/or personal information form and/or UMAT and /or other test including past VCE results. An interview may be offered by the Department of Dentistry and Oral Health when considered appropriate.

Students with a previous low GPA or no past VCE academic record are encouraged to sit UMAT.

Please refer to the Victorian Tertiary Admissions Centre Guide for further information.

The Department of Dentistry and Oral Health gives special consideration to indigenous applicants and applicants from rural areas, this detail should be addressed within the personal information form and supporting documentation provided.

Current undergraduate applicants within La Trobe University should apply for an internal course transfer. Information on how to apply can be found at <http://www.latrobe.edu.au/study/apply/undergraduate-study/transfer-between-courses>.

Further information can be found on the school homepage at: www.latrobe.edu.au/oral-health

Monash University

Bachelor of Medicine and Bachelor of Surgery (Course code 0040)

It is expected that there will be 190 Commonwealth Supported Places, 62 Bonded Medical Places (BMP) and approximately 6 Medical Rural Bonded Scholarship Scheme places available to 2011 school leavers for entry to the five-year medicine course. Thirty (30) of these places are available to students entering the Extended Rural Cohort. Full-fee paying places are no longer available for domestic students.

Entry is available to school leavers only, i.e. applicants with no academic record at a tertiary education institution.

Selection will be based on a combination of:

- > Performance in UMAT;
- > Performance in an interview; and
- > Performance in Year 12 studies (ATAR).

Prerequisites:

- > English (Year 12 or NZ NCEA Level 3);
- > Chemistry (Year 12 or NZ NCEA Level 3).

The results in both prerequisite subjects must be equivalent to a minimum study score of 30 in the Victorian Certificate of Education (VCE); a minimum study score equivalent to 35 is required for ESL.

The Faculty gives special consideration to applicants of Aboriginal and Torres Strait Islander origin. Applicants of rural origin are invited to apply for inclusion on the Dean's Rural List.

Full details of selection criteria and the selection process are set out in the booklet 'Undergraduate Medicine at Monash 2011', available from the Faculty of Medicine, Nursing and Health Sciences.

All applications for the Medicine course must be submitted to the Victorian Tertiary Admissions Centre (VTAC) by 30 September 2011.

Late applications received after 12 November 2011 will not be accepted. The Medicine course cannot be added to your preferences after you have made your initial application to VTAC.

International applicants are not required to take UMAT; instead, they should sit ISAT (see www.acer.edu.au/isat).

For further information, see www.med.monash.edu.au

Bachelor of Pharmacy Bachelor of Pharmacy/Commerce

There will be approximately 130 Commonwealth Supported Places available to applicants to the Bachelor of Pharmacy (or Combined Pharmacy/Commerce) degree programs for 2011.

Selection will be based on a combination of:

- > Performance in UMAT;
- > ATAR, including performance in Year 12 prerequisite subjects; and
- > Performance in first year tertiary studies (where applicable).

Prerequisites:

- > English (Year 12);
- > Chemistry (Year 12);
- > Mathematical Methods (Year 12).

The results in prerequisite subjects must be equivalent to a minimum of 30 in the Victorian Certificate of Education (VCE), or 35 for English (ESL).

For further information, see www.pharm.monash.edu.au

Bachelor of Physiotherapy

There will be approximately 74 Commonwealth Supported Places available to 2011 applicants to the Bachelor of Physiotherapy degree program.

For Year 12 applicants, selection will be based on a combination of:

- > Performance in UMAT;
- > ATAR, including performance in Year 12 prerequisite subjects; and
- > Interview.

For non-Year 12 applicants, selection will be based on a combination of:

- > Performance in UMAT;
- > GPA, including performance in Year 12 prerequisite subjects and their tertiary equivalent; and
- > Interview.

Prerequisites:

- > VCE units 3 and 4 – a study score of at least 35 in English (ESL) or 30 in English (any) and in any two of biology, chemistry, mathematical methods, physics or specialist mathematics).

Monash University gives special consideration to applicants from rural and remote areas of Australia and to applicants of Aboriginal and Torres Strait Islander origin who apply through VTAC and apply for the Special Entry Access Scheme.

Timely applications for the Physiotherapy course must be submitted to the Victorian Tertiary Admissions Centre (VTAC) by 30 September 2011.

International applicants will be considered for entry in 2012.

For further information, see www.med.monash.edu.au/physiotherapy

The University of Western Australia

Doctor of Medicine (MD) and Doctor of Dental Medicine (DMD)

UWA no longer offers an undergraduate course in medicine or dentistry. Instead, we will be offering a four year postgraduate Doctor of Dental Medicine (DMD) course and a four year Doctor of Medicine (MD) course with some entry pathways available to school leaver applicants. There are three entry pathways for school leavers: the Assured Pathway (available to domestic and international applicants), the Rural Pathway (available to domestic applicants only) and the Indigenous Pathway.

Assured Pathway (for school leavers with high academic results)

- > A quota of approximately 40 Commonwealth Supported Places (CSPs) is available for domestic school leavers for medicine and approximately 5 CSPs are available for domestic school leaver applicants for dentistry.

Selection for the Assured Pathway (high academic achievement) will be based on:

- > Performance in UMAT;
- > ATAR or equivalent school-leaving result (minimum ATAR of 99.00 or equivalent required);
- > Interview.

Students gaining entry to the Assured Pathway must complete one of UWA's five undergraduate bachelor degrees (Arts, Commerce, Design, Philosophy or Science). Taking up an assured place in the graduate programme is conditional on applicants obtaining a minimum Grade Point Average (GPA) of 5.50 in their initial UWA degree. Applicants wishing to progress to the DMD will also need to satisfactorily complete a manual dexterity and a spatial awareness admission test.

Applicants will need to apply for the Assured Pathway (high academic achievement) via TISC by 30 September 2011.

Assured Pathway (international school leavers)

International applicants are also eligible to apply for the Assured Pathway (international school leavers).

Selection for the Assured Pathway (international school leavers) will be based on:

- > Performance in ISAT;
- > ATAR or equivalent school-leaving result (minimum ATAR to be advised. Please contact Faculty admissions for details.);
- > Interview.

Note: We do not accept UMAT results for International applicants.

There will be approximately 15 places available for international applicants in medicine and approximately 3 places available in dentistry. International applicants will need to apply for the Assured Pathway via the UWA International Centre by 30 June 2011.

Rural Pathway

- > A quota of approximately 30 Commonwealth Supported Places (CSPs) is available for domestic school leavers for

medicine and approximately 3 CSPs are available for domestic school leaver applicants for dentistry.

Selection for entry will be based on:

- > Performance in UMAT;
- > ATAR or equivalent school-leaving result (minimum ATAR of 96.00 or equivalent required);
- > Interview.

Students gaining entry to the Rural Pathway must complete one of UWA's five undergraduate bachelor degrees (see above). Taking up an assured place in the graduate programme is conditional on applicants obtaining a minimum Grade Point Average (GPA) of 5.50 in their initial UWA degree. Applicants wishing to progress to the DMD will also need to satisfactorily complete a manual dexterity and a spatial awareness admission test.

Indigenous Pathway

The Faculty encourages Aboriginal and Torres Strait Islander people to consider applying for entry into medicine or dentistry. In addition to the school leaver entry pathways there are alternative pathways available for Aboriginal and Torres Strait Islander applicants. These are available through the Centre for Aboriginal Medical and Dental Health (see www.camdh.uwa.edu.au for further details).

Further information can be obtained by contacting the faculty at meddentadmissions@uwa.edu.au or by visiting our website at www.meddent.uwa.edu.au/admissions.

University of Tasmania

Bachelor of Medicine and Bachelor of Surgery

There will be a total intake of 120 in 2012.

To be considered for admission, applicants must take UMAT and have obtained at least Satisfactory Achievement awards in the following subjects of the Tasmanian Certificate of Education (TCE) or its equivalent:

- > Year 12 Chemistry (CHM315109);
- > Year 12 English Communications (ENC315109) or Year 12 English Studies (ENS315109) or Year 12 English Writing (ENW315109).

Selection within each of the entry categories will be competitive, with applicants ranked by performance in UMAT (taking account of performance in each of the three sections).

Interviews are not part of the selection process.

Entry Categories

School Leavers: School leaver applicants must satisfy academic requirements of a minimum ATAR score of 95.

Non-School Leavers: Non-school leavers must demonstrate that they have met the academic requirements for admission to the course through previous study.

Applications must be submitted directly to University of Tasmania by Friday 30 September 2011.

Late applications will not be accepted.

International Fee Paying: Applicants are not required to take UMAT but instead must take ISAT.

International fee-paying students must meet minimum English requirements (an IELTS score of no less than 7 within the last 24 months.)

Individuals in this category should apply to the International Admissions Office by 31 August 2011.

Late applications will not be accepted.

Information for prospective applicants is available at: www.prospective.utas.edu.au

University of Auckland

(Auckland, New Zealand)

Bachelor of Medicine & Bachelor of Surgery

It is anticipated that there will be approximately 191 government funded places available for entry in 2012. This includes up to 30 places under the Rural Origin Medical Preferential Entry (ROMPE) Scheme, and up to 45 places under the Maori Pacific Admission Scheme (MAPAS).

Entry Categories: www.fmhs.auckland.ac.nz/medicine

Overlapping Year 1 Entry: Applicants must complete the 8 required courses in either the Bachelor of Health Sciences (BHSc) or Bachelor of Science (BSc-Biomedical Science specialization) programmes at the University of Auckland in 2011 (1st and 2nd semester). Each applicant must achieve a minimum GPA of 6 (B+ average) across their 8 required courses in order to be eligible for entry consideration into MBChB Part II in 2012.

All applicants deemed eligible will then be ranked on their grades achieved across 4 common courses that are offered in both the BHSc and the BSc (Biomedical Science) programmes.

Graduate Entry: Applicants who achieve a minimum GPA of 6 (B+ average) across a full degree (on a full-time basis) from a New Zealand university will be eligible for consideration for an admissions interview. All graduate applicants deemed eligible will then be ranked based on their GPA from their last two academic years of full-time study only. The last year of full-time study must be no more than five years prior to application.

Final selection from the Overlapping Year 1 and the Graduate Entry categories will be based on the following:

- > Academic performance at University;
- > Performance in UMAT (most recent results used); and
- > Performance in a personal semi-structured interview.

All prospective applicants should obtain a copy of the current Faculty of Medical & Health Sciences Undergraduate Prospectus, available from the University by calling 0800 61 62 63 (NZ only) or email: studentinfo@auckland.ac.nz

How to apply:

New Students: If you are not enrolled at the University of Auckland in 2011, apply online at: www.auckland.ac.nz and click on "Apply Now".

Returning Students: If you are currently enrolled at the University of Auckland and would like to change your existing programme, apply on SSO: <http://www.studentservices.auckland.ac.nz/uoa/home/student-services-online/sso-apply>

Application closing date: 1 November 2011 – late applications will not be accepted.

Supplementary Information Form (MH03 – Medicine). The form can be completed online at: <http://www.fmhs.auckland.ac.nz/faculty/undergrad/forms/default.aspx>

*The information is provided as a general guide for students and is subject to alteration. Applicants should consult the faculty website for the latest information: www.fmhs.auckland.ac.nz/medicine

University of Otago

(Dunedin, New Zealand)

Bachelor of Dental Surgery

Bachelor of Medical Laboratory Science

Bachelor of Medicine and Bachelor of Surgery

Bachelor of Physiotherapy

Applications for admission to the Health Sciences Professional Programmes in Dentistry, Medical Laboratory Science, Medicine and Physiotherapy are made via the Otago Health Sciences First Year, Second Year of University Study, Competitive Graduate and Alternative Categories of Admission. The closing date for applications is 1 October 2011. Late applications are not accepted. Successful applicants are admitted to second year classes in 2012.

The total number of places available in each of these second year Health Sciences Professional Programmes for domestic students:

- > Dentistry 54
- > Medical Laboratory Science 60
- > Medicine 254
- > Physiotherapy 120

Please note these numbers are distributed throughout all categories of admission to each Professional Programme.

For details regarding admission to the Health Sciences Professional Programmes please refer to www.otago.ac.nz/HealthSciences.

Applicants have the opportunity to apply under the Maori and/ or Pacific Origins subcategories for entry to the Professional Programmes. In addition, Medicine applicants can apply under the Rural Origins subcategory.

General Information

Students wishing to enrol in the Health Sciences First Year Programme for 2012 must register by 10 December 2011, although late registrations can be made.

International students wishing to apply for Dentistry, Medical Laboratory Science, Medicine or Physiotherapy should contact the International Office, University of Otago, PO Box 56, Dunedin, New Zealand.

Australian citizens and Australian Permanent Residents are not considered international students.

Further information is available at:
www.otago.ac.nz/HealthSciences.

UMAT Checklist and Timeline

Registration Steps

- Fill in registration form by deadline
- Pay online or send in payment
- Send in proof of concession if applicable
- Receive completed Registration Voucher via email

After Registration

- Keep your UMAT ID safe
- Get your ID ready
- Save the UMAT Office email address in your email contacts list: umat@acer.edu.au
- Check your email and the UMAT website regularly

2 weeks before the test

- Download and print your Admission Ticket
- Plan how you will get to the Test Centre

On the day of the test

- Bring your Admission Ticket
- Bring your ID
- Bring pencil, eraser and a bottle of water
- Don't be late

Late September

- View your results online

Contact Details

The University of Adelaide

Faculty of Health Sciences
Ph: 08 8303 4859
Fax: 08 8303 3788
Email: admissions.health@adelaide.edu.au
Web: www.health.adelaide.edu.au

Flinders University

Admissions / Prospective Students Office
Ph: 08 8201 3074 or 1300 657 671 (local call cost within Australia)
Fax: (08) 8201 2580
Email: admissions@flinders.edu.au
Web: www.flinders.edu.au/courses/undergrad/bclsbmb/
School of Medicine
Web: www.flinders.edu.au/medicine/

Charles Darwin University

CDU Information Centre
Ph: 1800 061 963

The University of Newcastle

The Enquiry Centre
Ph: 02 4921 5000
Fax: 02 4921 2020
Email: enquirycentre@newcastle.edu.au
Web: www.newcastle.edu.au/jmp

University of New England

School of Rural Medicine
Ph: 02 6773 3877
Fax: 02 6773 2388
Email: ruralmed@une.edu.au
Web: www.une.edu.au/bmed

University of Western Sydney

School of Medicine
Ph: 02 9852 4632
Fax: 02 9852 4700
Email: medstudent@uws.edu.au
Web: www.uws.edu.au/medicine/som

The University of New South Wales

Faculty of Medicine
Ph: 02 9385 8765
Fax: 02 9385 1874
Email: medicine.info@unsw.edu.au
Web: www.med.unsw.edu.au

School of Optometry

Ph: 02 9385 4639
Fax: 02 9313 6243
Email: optometry@unsw.edu.au
Web: www.optom.unsw.edu.au

Bond University

Faculty of Health Sciences and Medicine
Ph: 1800 074 074
Email: information@bond.edu.au
Web: www.bond.edu.au/hsm/medicine

The University of Queensland

School of Medicine
Ph: 07 3365 5278
Fax: 07 3365 5433
Email: admissions@som.uq.edu.au
Web: www.som.uq.edu.au

School of Dentistry

Ph: 07 3365 8071
Fax: 07 3365 8199
Email: dentistry@uq.edu.au
Web: www.uq.edu.au/study

Monash University

Faculty of Medicine, Nursing and Health Sciences
Ph: 03 9905 4327
Fax: 03 9905 9327
Email: medicineadmissions@med.monash.edu.au
Web: www.med.monash.edu.au

Department of Physiotherapy

Ph: 03 9904 4466
Fax: 03 9904 4812
Email: physiotherapy@med.monash.edu.au
Web: www.med.monash.edu.au/physiotherapy

Faculty of Pharmacy and Pharmaceutical Sciences

Ph: 03 9903 9635
Fax: 03 9903 9581
Email: info@pharm.monash.edu.au
Web: www.pharm.monash.edu.au

La Trobe University

School of Dentistry and Oral Health
Ph: 03 5444 7417
Fax: 03 5444 7977
Email: oralhealth@latrobe.edu.au
Web: www.latrobe.edu.au/oral-health

The University of Western Australia

Faculty of Medicine, Dentistry and Health Sciences
Ph: (08) 9384 8633
Fax: (08) 9384 6238
Email: meddentadmissions@uwa.edu.au
Web: www.meddent.uwa.edu.au/admissions

University of Tasmania

Faculty of Health Science
Ph: 1300 363 864
Fax: 03 6226 2087
Email: Course.Info@utas.edu.au
Web: www.healthsci.utas.edu.au

The University of Auckland

Faculty of Medical and Health Sciences
Ph: (+64 9) 373 7599 ext 84888 (or 0800 61 62 63 within NZ)
Fax: (+64 9) 308 2380
Email: health@auckland.ac.nz
Web: www.fmhs.auckland.ac.nz/

University of Otago

Division of Health Sciences
Ph: (+64 3) 479 7000 (or 0800 80 80 98 within NZ)
Fax: (+64 3) 479 5058
Email: health-sciences@otago.ac.nz
Web: www.otago.ac.nz/HealthSciences

UMAT Office at ACER

Private Bag 55
Camberwell VIC 3124
AUSTRALIA

Email: umat@acer.edu.au
Phone: (03) 8508 7643
International: (+61 3) 8508 7643
Web: <http://umat.acer.edu.au>